

Offsite Storage of Library Materials in Florida: Current Situation and Future Plans

Images for the
Statewide Storage Task Force
June 2010

Current one million volume “medium-density” facility (ALF) in Gainesville



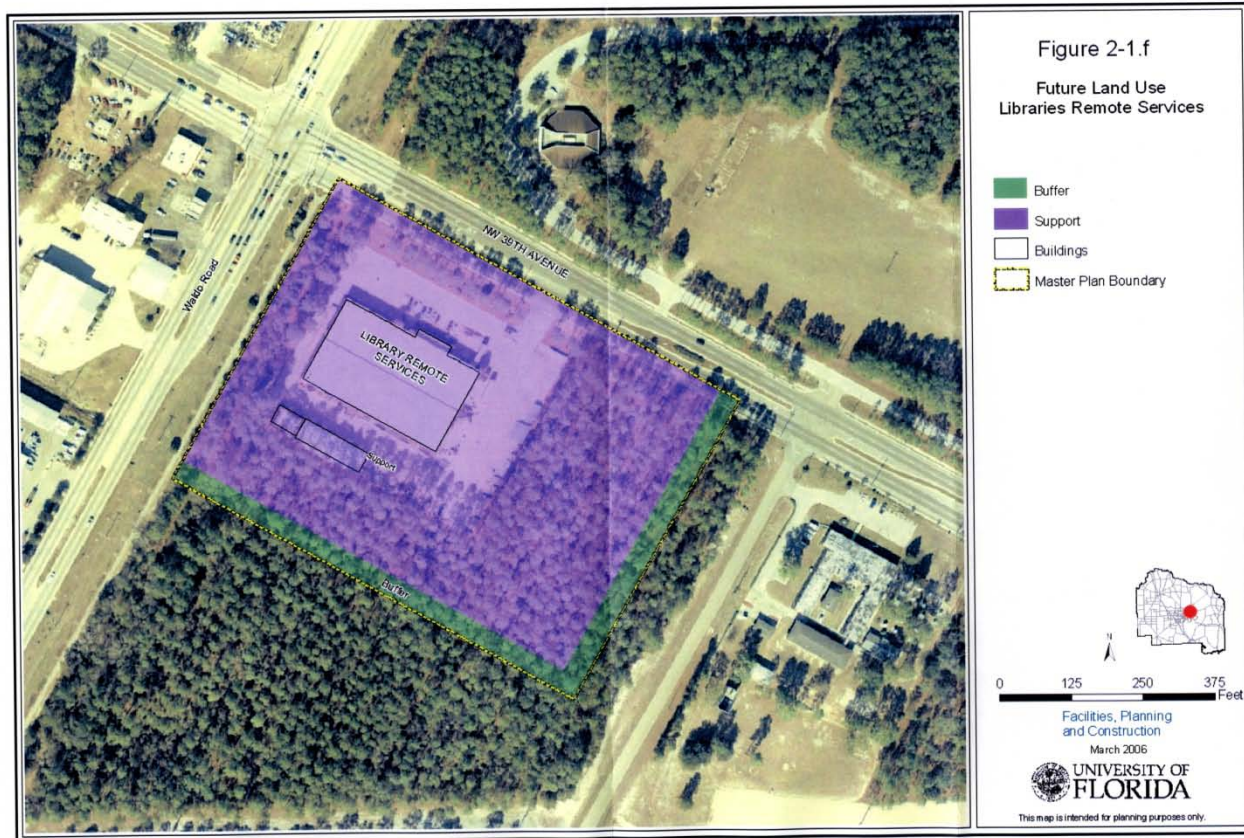
Small, heated brick office building on the front of ALF



Materials in ALF are shelved by call number on tall shelves of standard depth



Plat map of the ALF property shows space for new high-density building and future expansion



Deep shelving at a high-density facility using cardboard trays & archive boxes



Another view of high-density shelving with materials in trays by height & width



Order picker for use in shelving & retrieval at a high-density facility



Concept drawing of 5.2 million volume high-density facility adjacent to remodeled ALF



Concept drawing of loading dock & research building, with high-density storage module on far left



Sketch of high-density storage facility & renovated ALF showing space for green roof

